



★★★★★  
**REAL HYDROFIT & CO.**®

SPLTS: PRESSURE GAUGES - FLEXIBLE HOSES - HYDRAULIC FITTINGS

# PRESSURE GAUGES



UDYOG AADHAAR MEMORANDUM:  
MH19B0048230



ISO 9001 :  
2015 CERTIFIED COMPANY



UDYAM REGISTRATION :  
UDYAM-MH-19-0002724



[www.realhydrofit.com](http://www.realhydrofit.com)





# ★★★★★ *REAL HYDROFIT & CO.*®

SPLTS: PRESSURE GAUGES - FLEXIBLE HOSES - HYDRAULIC FITTINGS

## INDEX

PRODUCTS	PG. No.
Glycerin Filled Pressure Gauges	1
High pressure Glycerin filled Pressure Gauges	2
Weather Proof Pressure Gauges	3
Precision Test Pressure Gauges	4
Electric Contact Gauges	5
Single Diaphragm Differential Pressure Gauges	6
Diaphragm Sealed Pressure Gauges	7-8
BI-Metal Temperature Gauges	9-10
Mercury / Gas Filled Temperature Gauges	11-12
Utility Pressure Gauges	13-14
Schaffer & low pressure Diaphragm Pressure Gauges	15-16
Pressure Gauge Accessories	17-18
Digital Pressure Gauges	19
Electro Magnetic Flowmeters	20
Thermocouple & RTD	21
Resistance Thermometer	22



[sales@realhydrofit.com](mailto:sales@realhydrofit.com)  
[reohydesales@gmail.com](mailto:reohydesales@gmail.com)



[www.realhydrofit.com](http://www.realhydrofit.com)



9869078630, 9167921882  
91 22 66573951/52/53, 23717488

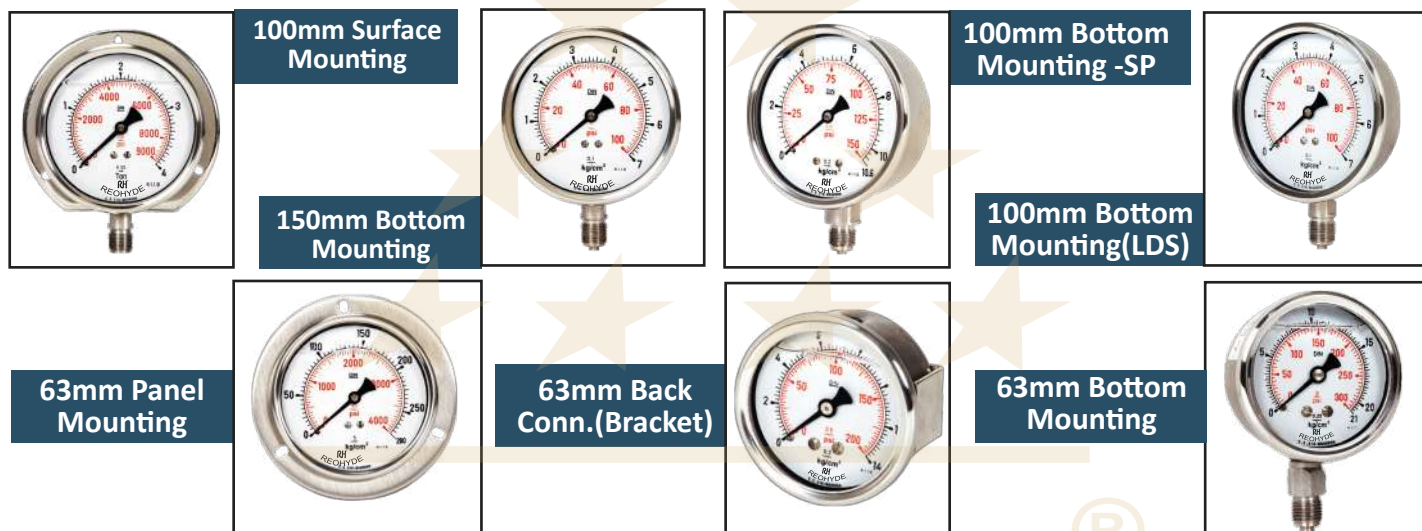


# ★★★★★ REAL HYDROFIT & CO.®

SPLTS: PRESSURE GAUGES - FLEXIBLE HOSES - HYDRAULIC FITTINGS

## GLYCERIN FILLED PRESSURE GAUGES

RH Glycerin Filled Pressure Gauges are ideal for dampening the effect of vibration & pulsation. It also lubricate the movement & Internal parts which extends the life of gauge. It enhance the reliability and integrity of measuring system for long periods under extreme operating condition.



### CONSTRUCTION FEATURES

Dial Size	63mm, 100mm, 150mm & 250mm
Accuracy	±1% of full scale
Case & Bezel (IP-65)	SS 304, Crimp Type / Snap Action Bayonet Type
Movement	SS 304 / Brass (63mm)
Pressure Element	SS 316 (≤ 70 bar 'C' Type / > 70 bar Coil Type)
Socket	SS 304 / SS 316
Dial	Aluminum white painted with 270° black scale marking
Pointer	Al. / Brass with black finish
Window	Acrylic / Safety glass
Blow Out Protection	On Top at 0.6 Kg/cm <sup>2</sup>
Over Load Protection	125% of f.s.d. for ≤ 150 Kg/cm <sup>2</sup> 115% of f.s.d. for > 150 Kg/cm <sup>2</sup>
Joints	Argon arc welded / Brass silver brazed
Mounting	Stem (Bottom) , Surface , Panel Mounting, Flush Panel (Bracket Type)
Connection	¼" / ⅜" / ½" BSP / NPT
Scale Range	Vacuum, Compound & Pressure up to 1400 Kg/cm <sup>2</sup>

### MODEL OPTION

**SP** : All SS Models with Heavy Duty Parts.

**LDS** : Model with SS-304 Case, Bezel, Socket, SS-316 Bourdon & Brass Movement

**ECO** : Model in Carbon Steel (Nickel Plated) Case, SS-304 Bezel, Sockets & Brass Movement

### APPLICATION

Air Compressor, Hydraulic Pressure, Pumps, Industrial Power Plants, Marine engines, Pipelines and Transmission Stations where Vibration & Pulsation are destructive factors.



sales@realhydrofit.com  
reohydesales@gmail.com



www.realhydrofit.com



9869078630, 9167921882  
91 22 66573951/52/53, 23717488



# ★★★★★ REAL HYDROFIT & CO.®

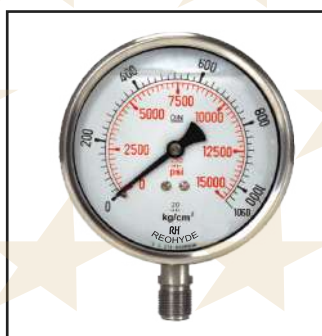
SPLTS: PRESSURE GAUGES - FLEXIBLE HOSES - HYDRAULIC FITTINGS

## HIGH PRESSURE GLYCERIN FILLED PRESSURE GAUGES

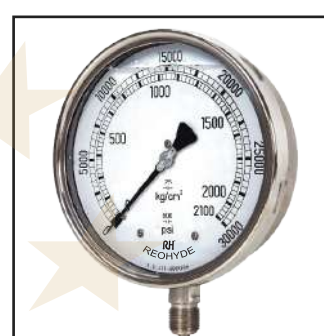
“RH” High Pressure Glycerin Filled Gauges are Specially for High Pressure Application & Testing of High Pressure Devices. It is Mfg. & Calibrate under Delectated (Imported) High Pressure System. It means Performance of the gauge enhance the reliable and integrated for long periods under extreme operating condition.



**150mm  
Bottom Mounting**



**100mm  
Bottom Mounting**



**150mm  
Bottom Mounting**

### CONSTRUCTION FEATURES

Dial Size	100mm, 150mm & 250mm.
Accuracy	±1.6% of full scale
Case & Bezel (IP-65)	SS 304, Snap Action Bayonet Type.
Movement	SS 304
Pressure Element	SS 316
Socket	SS 304 / SS 316
Dial	Aluminum white painted with 270° black scale marking
Pointer	Al. / Brass with black finish
Window	Acrylic / Safety glass
Blow Out Protection	On top at 0.6 Kg/cm <sup>2</sup>
Over Load Protection	115% of f.s.d.
Joints	Argon arc welded
Mounting	Stem (Bottom), Surface, Panel Mounting, Flush Panel (Bracket Type)
Connection	3/8" / 1/2" BSP / NPT
Scale Range	Pressure up to 15000 PSI to 80000 PSI

### MODEL OPTION

**SP:** All SS Models with Heavy Duty Parts.

### APPLICATION

Specially in High Pressure Application, Hydraulic Pressure, Hydraulic Power Packs, High Pressure Pumps, Testing of High Pressure Devices.



sales@realhydrofit.com  
reohydesales@gmail.com



www.realhydrofit.com



9869078630, 9167921882  
91 22 66573951/52/53, 23717488



# ★★★★★ REAL HYDROFIT & CO.®

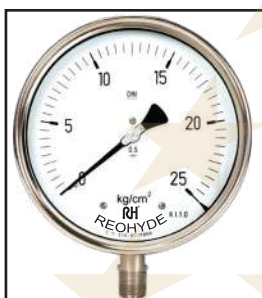
SPLTS: PRESSURE GAUGES - FLEXIBLE HOSES - HYDRAULIC FITTINGS

## WEATHER PROOF PRESSURE GAUGES

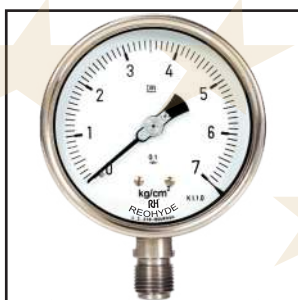
RH Weather Proof Gauges suitable for corrosive environment and gaseous or liquid media that will not obstruct the pressure system.



250mm  
Bottom Mounting



150mm  
Bottom Mounting



100mm  
Bottom Mounting



63mm  
Bottom Mounting



100mm  
Anti Vibration

### CONSTRUCTION FEATURES

Dial Size	63mm, 100mm, 150mm & 250mm
Accuracy	±1% of full scale
Case & Bezel (IP-65)	SS 304 Snap Action Bayonet
Movement	SS 304
Pressure Element	SS 316 (≤ 70 bar 'C' Type / > 70 bar Coil Type)
Socket	SS 304 / SS 316
Dial	Aluminum white painted with 270° black scale marking
Pointer	Al. / Brass, Zero adjustment / Micro Zero Adjustment Pointer
Window	Toughened / Safety glass
Blow Out Protection	63mm on Top & 100 & 150mm on back side at 0.6 Kg/cm <sup>2</sup>
Over Load Protection	150% of f.s.d. for ≤ 150 Kg/cm <sup>2</sup> 115% of f.s.d. for ≤ 150 Kg/cm <sup>2</sup>
Joints	Argon arc welded
Mounting	Stem (Bottom) , Surface , Panel Mounting, Flush Panel (Bracket Type)
Connection	1/4" / 3/8" / 1/2" BSP / NPT
Scale Range	Vacuum, Compound & Pressure up to 1400 Kg/cm <sup>2</sup>

### OPTIONAL FEATURES

- SS 316 Case & Bezel available on request
- Ammonia (NH<sub>3</sub>), Oxygen (O<sub>2</sub>), Freon Scale available on request.
- Eco Model in Carbon Steel & SS Case available on request.

### APPLICATION

Chemical & Petrochemicals, Power generation, Pollution Control Equipment, Oil exploration and any other application requiring fine quality, long lasting pressure measurement etc...



sales@realhydrofit.com  
reohydesales@gmail.com



www.realhydrofit.com



9869078630, 9167921882  
91 22 66573951/52/53, 23717488



# ★★★★★ REAL HYDROFIT & CO.®

SPLTS: PRESSURE GAUGES - FLEXIBLE HOSES - HYDRAULIC FITTINGS

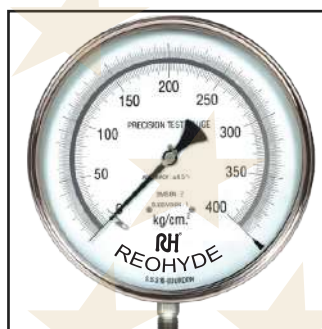
## PRECISION TEST PRESSURE GAUGES

“RH” Precision Test Pressure Gauges are extremely sensitive and highly accurate with adjustable knife edge pointer and mirror bends on the dial to assure precise readings and to eliminate parallax error.

Also suitable for gaseous and liquid media, particularly for testing and calibration.



150mm Precision Test Gauge



250mm Precision Master Gauge

### CONSTRUCTION FEATURES

Dial Size	150mm & 250mm.
Accuracy	±0.25% & ±0.5% of full scale
Case & Bezel (IP-65)	SS 304, Snap Action Bayonet Type.
Movement	SS 316, High Precision with Bi-Metal Link for Temperature Compensation.
Pressure Element	SS 316 (≤ 70 bar 'C' Type / > 70 bar Coil Type)
Socket	SS 316
Dial	Aluminum white painted with 270° black scale marking with mirror scale
Pointer	Al. Knife edge Micro zero adjustment type.
Window	Toughened/ Safety glass
Blow Out Protection	Back side at 0.6 Kg/cm <sup>2</sup>
Joints	Argon arc welded.
Mounting	Stem (Bottom), Surface, Panel Mounting, Flush Panel (Bracket Type)
Connection	½" BSP / NPT.
Scale Range	Vacuum, Compound & Pressure up to 1000 kg/cm <sup>2</sup>
Least Count	As per standard chart accuracy ±0.25% & ±0.5%

### APPLICATION

Used for re-calibration of general service pressure gauges or any other pressure related instruments.



sales@realhydrofit.com  
reohydesales@gmail.com



www.realhydrofit.com



9869078630, 9167921882  
91 22 66573951/52/53, 23717488



# ★★★★★ REAL HYDROFIT & CO.®

SPLTS: PRESSURE GAUGES - FLEXIBLE HOSES - HYDRAULIC FITTINGS

## ELECTRIC CONTACT GAUGES

“RH” Electric Contact Gauges are suitable for the measurement & control of line pressure / Temperature by switching ‘ON & OFF’ electrical equipment which eliminate the need of separate switches for equipment.



100mm Bottom Mtg Temp. Gauge with El Contact



100mm Bottom Mtg Pressure Gauge with El. Contact



150 Panel Mtg Pressure Gauge with El. Contact

### CONSTRUCTION FEATURES

Dial Size	100mm & 150mm
Accuracy	±1% of full scale
Case & Bezel (IP-65)	SS 304 Snap Action Bayonet type
Movement	SS 304
Pressure Element	SS 316 (≤ 70 bar ‘C’ Type / > 70 bar Coil Type)
Socket	SS 304 / SS 316
Dial	Aluminum white painted with 270° black scale marking.
Pointer	Al. / Brass, Zero adjustment / Micro Zero Adjustment Pointer.
Window	Acrylic glass.
Blow Out Protection	Back side at 0.6 Kg/cm <sup>2</sup>
Over Load Protection	125% of f.s.d. for ≤ 150 Kg/cm <sup>2</sup> 115% of f.s.d. for > 150 Kg/cm <sup>2</sup>
Joints	Argon arc welded.
Mounting	Stem (Bottom), Panel Mounting, Flush Panel (Bracket Type).
Scale Range	Vacuum & Pressure up to 700 Kg/cm <sup>2</sup>
Contact Details	380V AC/DC, 50 V A / 30 watts, Current not exceed 1 Amp.
Contact Type	Magnetic Single Contact (1NOs, 1NC) Double (1 NO+NC, 1NC+1NO, 2NO, 2NC)

### OPTIONAL FEATURES

- Diaphragm Sealed with Electrical Contact available on request.
- LPD with Electrical Contact available on request.

### APPLICATION

Control & Regulation of industrial process.  
Monitoring of plants and switching of electric circuit.  
Power plants, Chemical & petrochemical industries, pump, motor, turbine etc...



sales@realhydrofit.com  
reohydesales@gmail.com



www.realhydrofit.com



9869078630, 9167921882  
91 22 66573951/52/53, 23717488



# ★★★★★ REAL HYDROFIT & CO.®

SPLTS: PRESSURE GAUGES - FLEXIBLE HOSES - HYDRAULIC FITTINGS

## SINGLE DIAPHRAGM DIFFERENTIAL PRESSURE GAUGES

“RH” Differential Pressure Gauge is suitable for corrosive environment and gaseous media.



150mm  
Differential

100mm  
Differential

Low Pressure  
Differential

### CONSTRUCTION FEATURES

Dial Size	100mm & 150mm.
Accuracy	±1.6% of full scale
Case & Bezel (IP-65)	SS 304 Snap Action Bayonet Type.
Movement	SS 304
Pressure Element	SS 316L Single diaphragm.
HP / LP Chamber	SS 304 / SS 316
Dial	Aluminum white painted with 270° black scale marking
Pointer	Al. / Brass, Micro Zero Adjustment pointer.
Window	Toughened / Safety glass
Sealing Ring	Viton
Static Pressure	10 times of scale range.
Mounting	Direct & Surface.
Scale Range	250mmWc to 6000mmWc.....up to 10 Kg/cm <sup>2</sup>

### OPTIONAL FEATURES

- D P with Electrical contact available on request.
- Pressure equalizing valve available on request.
- Surface & Pipe Mounting on request.

### APPLICATION

Air, Gas & Filter Application.



sales@realhydrofit.com  
reohydesales@gmail.com



www.realhydrofit.com



9869078630, 9167921882  
91 22 66573951/52/53, 23717488



# ★★★★★ REAL HYDROFIT & CO.®

SPLTS: PRESSURE GAUGES - FLEXIBLE HOSES - HYDRAULIC FITTINGS

## DIAPHRAGM SEALED PRESSURE GAUGES

“RH” Diaphragm sealed Pressure Gauges are suitable for corrosive, contaminated, highly viscous, crystallizing, slurry or hot pressure media.



63mm Triclover Type Sealed



63mm Compact Type Sealed



100mm Threaded End Type



150mm Flange End Type



100mm Pulp & Paper Sealed



100mm Homogenizer Sealed

### CONSTRUCTION FEATURES

Dial Size	63mm, 100mm, 150mm & 250mm
Accuracy	±1% of full scale
Case & Bezel (IP-65)	SS 304 Snap Action Bayonet Type / Crimp Type
Movement	SS 304
Pressure Element	SS 316 (≤ 70 bar 'C' Type / > 70 bar Coil Type)
Socket	SS 316
Dial	Aluminum white painted with 270° black scale marking
Pointer	Al. / Brass, Zero adjustment / Micro Zero Adjustment Pointer
Window	Acrylic / Toughened / Safety glass
Blow Out Protection	On Top / On back side at 0.6 Kg/cm <sup>2</sup>
Over Load Protection	125% of f.s.d. for ≤ 150 Kg/cm <sup>2</sup> 115% of f.s.d. for > 150 Kg/cm <sup>2</sup>
Joints	Argon arc welded
Mounting	Stem (Bottom) , Surface , Panel Mounting, Surface with capillary extension
Scale Range	Vacuum, Compound & Pressure up to 420 Kg/cm <sup>2</sup>



sales@realhydrofit.com  
reohydesales@gmail.com



www.realhydrofit.com



9869078630, 9167921882  
91 22 66573951/52/53, 23717488



# ★★★★★ *REAL HYDROFIT & CO.*®

SPLTS: PRESSURE GAUGES - FLEXIBLE HOSES - HYDRAULIC FITTINGS

## DIAPHRAGM SEALED PRESSURE GAUGES

### SEALED UNIT

Upper Chamber Material	SS 304
Diaphragm Material	SS 316L / MONEL / HASTALLOY - C / TANTALUM or any other material. Teflon Coating can be provided if required
Lower Chamber	SS 304 / SS 316 / MONEL or any other material (Threaded / Flange type)
Filling Fluid	Silicon Oil or suitable liquid as desired by the user.

### OPTIONAL FEATURES

- Different type of seals & connection available
- Different threaded type, Open Flange Type, Flush welded diaphragm type
- Sandwich flange (cell) type, Extended welded diaphragm type, Capillary extension type.
- SMS & TC Connection for Food, Biochemical & Pharmaceutical industries.
- Homogenizer flange (Round or Square) Type.
- Special Connection for Pulp & Paper Industries.
- Eco Model available on request.

### APPLICATION

Chemical, Petrochemical, Pulp & Paper, Food Processing industries, in water & sewage treatment plants and in electric power plant etc...



[sales@realhydrofit.com](mailto:sales@realhydrofit.com)  
[reohydesales@gmail.com](mailto:reohydesales@gmail.com)



[www.realhydrofit.com](http://www.realhydrofit.com)



9869078630, 9167921882  
91 22 66573951/52/53, 23717488



# ★★★★★ *REAL HYDROFIT & CO.*®

SPLTS: PRESSURE GAUGES - FLEXIBLE HOSES - HYDRAULIC FITTINGS

## BI-METAL TEMPERATURE GAUGES

RH Bi-Metal Temperature Gauges are economical, rugged, reliable, temperature measuring instruments. The Bi-Metal helix is properly heated, coated with viscous silicon to minimize pointer oscillation and improve temperature transmission.



63mm Bottom Mounting



150mm Bottom Mounting



63mm Back Direct Mounting



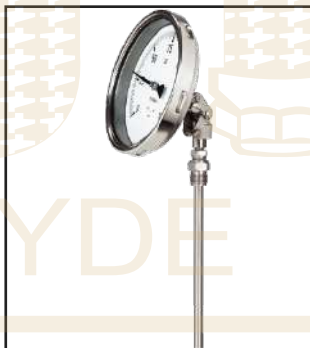
Thermowells



40mm Back Direct Mounting



100mm Every Angle



150mm Every Angle



[sales@realhydrofit.com](mailto:sales@realhydrofit.com)  
[reohydesales@gmail.com](mailto:reohydesales@gmail.com)



[www.realhydrofit.com](http://www.realhydrofit.com)



9869078630, 9167921882  
91 22 66573951/52/53, 23717488



# ★★★★★ *REAL HYDROFIT & CO.*®

SPLTS: PRESSURE GAUGES - FLEXIBLE HOSES - HYDRAULIC FITTINGS

## BI-METAL TEMPERATURE GAUGES

### CONSTRUCTION FEATURES

Dial Size	63mm, 100mm & 150mm
Accuracy	±1.6% of full scale
Case & Bezel (IP-65)	SS 304 Snap Action Bayonet Type & SS 304 press fit type
Pressure Element	Wounded coil of Bi-Metal
Stem & Bulb	SS 316, SS 304
Stem & Bulb Dia	6mm, 8mm, 10mm & 12mm
Stem Length (Std.)	Up to 300mm
Dial	Aluminum white painted with 270° black scale marking.
Pointer	Brass / Alu. with black finish.
Window	Plain Glass / Toughened / Safety glass
Joints	Argon arc welded
Mounting	Stem (Bottom) , Back & Every angle
Connection	¼" / ⅜" / ½" BSP / NPT (Fix or Adjustable)
Scale Range	-30° to 50° to 600° C or equivalent in °F

### OPTIONAL FEATURES

- Dual scale °C & °F available on request.
- Extra stem length on request.
- TC Connection on request.

### APPLICATION

Domestic & industrial heating system, hot water boiler, power plant, food & beverage industries, pharmaceutical industry etc...



[sales@realhydrofit.com](mailto:sales@realhydrofit.com)  
[reohydesales@gmail.com](mailto:reohydesales@gmail.com)



[www.realhydrofit.com](http://www.realhydrofit.com)



9869078630, 9167921882  
91 22 66573951/52/53, 23717488



# ★★★★★ *REAL HYDROFIT & CO.*®

SPLTS: PRESSURE GAUGES - FLEXIBLE HOSES - HYDRAULIC FITTINGS

## MERCURY / GAS FILLED TEMPERATURE GAUGES

**RH Mercury / Gas Filled Temperature Gauges** are economical, rugged, reliable and accurate measuring instruments are made of bulb, transmitting capillary and flat bourdon or coiled bourdon tube which are pressure filled with Mercury / Inert Gas. The system is pressurized with mercury / Inert Gas.

Variation of the ambient temperature are compensated by means of a Bi-Metal link between movement mechanism & Bourdon Tube.



**150mm Bottom Mounting**



**100mm Bottom Mounting**



**63mm Bottom Mounting**



**150mm Armoured Capillary Type**



[sales@realhydrofit.com](mailto:sales@realhydrofit.com)  
[reohydesales@gmail.com](mailto:reohydesales@gmail.com)



[www.realhydrofit.com](http://www.realhydrofit.com)



9869078630, 9167921882  
91 22 66573951/52/53, 23717488



# ★★★★★ *REAL HYDROFIT & CO.*®

SPLTS: PRESSURE GAUGES - FLEXIBLE HOSES - HYDRAULIC FITTINGS

## MERCURY / GAS FILLED TEMPERATURE GAUGES

### CONSTRUCTION FEATURES

Dial Size	63mm, 100mm, 150mm & 250mm
Accuracy	±1% of full scale
Case & Bezel (IP-65)	SS 304 Snap Action Bayonet Type
Temperature Element	Mercury / Gas actuated
Stem & Bulb	SS 316
Stem & Bulb Dia	6mm, 8mm, 10mm & 12mm
Stem Length (Std.)	Up to 300mm
Capillary Material	M S / SS 316 Micro bore
Capillary Protection	SS 304 Tubing, PVC, SS Armored
Dial	Aluminum white painted with 270° black scale marking.
Pointer	Al. / Brass, Zero Adjustment / Micro Zero Adjustment Pointer
Window	Toughened / Safety glass
Joints	Argon arc welded
Mounting	Stem (Bottom) , Back & Surface with capillary extension
Connection	1/4" / 3/8" / 1/2" BSP / NPT (Adjustable)
Scale Range	-30° to 50° to 650° C or equivalent in °F

### OPTIONAL FEATURES

- Anti vibration fitting, Dual scale °C & °F available on request.
- Liquid filled case with Glycerine or Silicon on request.
- Alarm contact type & Capillary extension on request.
  - Extra Stem length on request.
  - Extra Capillary length on request.

### APPLICATION

Pharmaceutical industries, Chemicals & Petrochemicals, Fertilizers & Refineries, Filters for liquid control system and all Process Industries.



[sales@realhydrofit.com](mailto:sales@realhydrofit.com)  
[reohydesales@gmail.com](mailto:reohydesales@gmail.com)



[www.realhydrofit.com](http://www.realhydrofit.com)



9869078630, 9167921882  
91 22 66573951/52/53, 23717488



# ★★★★★ *REAL HYDROFIT & CO.*®

SPLTS: PRESSURE GAUGES - FLEXIBLE HOSES - HYDRAULIC FITTINGS

## UTILITY PRESSURE GAUGES

“RH” Utility Gauges are designed for long & reliable service under rugged condition.



**100mm  
Surface Mounting**



**100mm  
Bottom Mounting**



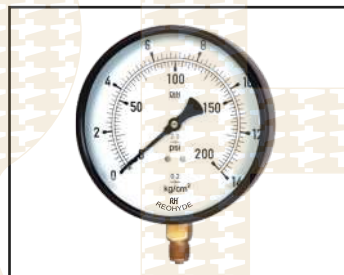
**50mm  
Bottom Mounting**



**63mm  
Panel Mounting**



**250mm  
Surface Mounting**



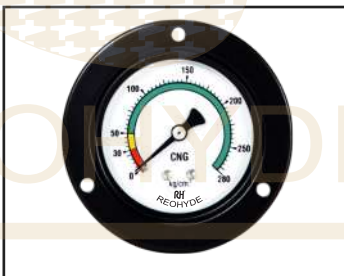
**150mm  
Bottom Mounting**



**63mm  
Bottom Mounting**



**50mm Back  
Direct Mounting**



**63mm Back  
Direct Mounting**



**40mm Back  
Direct Mounting**



[sales@realhydrofit.com](mailto:sales@realhydrofit.com)  
[reohydesales@gmail.com](mailto:reohydesales@gmail.com)



[www.realhydrofit.com](http://www.realhydrofit.com)



9869078630, 9167921882  
91 22 66573951/52/53, 23717488



# ★★★★★ REAL HYDROFIT & CO.®

SPLTS: PRESSURE GAUGES - FLEXIBLE HOSES - HYDRAULIC FITTINGS

## UTILITY PRESSURE GAUGES

### CONSTRUCTION FEATURES

Dial Size	40mm, 50mm, 63mm, 100mm, 150mm & 250mm.
Accuracy	±2% of full scale
Case & Bezel	Drawn steel black painted press fit type.
Movement	Brass
Pressure Element	Brass ( ≤ 70 bar 'C' Type), SS 316 (> 70 bar Coil Type)
Socket	Brass
Dial	Aluminum white painted with 270° black scale marking.
Pointer	Aluminum pointer with black finish.
Window	Plain glass
Over Load Protection	125% of f.s.d. for ≤ 150 Kg/cm <sup>2</sup> 115% of f.s.d. for > 150 Kg/cm <sup>2</sup>
Joints	Soldering
Mounting	Stem (Bottom), Surface, Panel Mounting. Flush Panel (Bracket Type).
Connection	1/8", 1/4" / 3/8" / 1/2" BSP/ NPT
Scale Range	Vacuum & Pressure up to 700 Kg/cm <sup>2</sup>

### OPTIONAL FEATURES

- Ammonia (NH<sub>3</sub>), Oxygen(O<sub>2</sub>), Freon Scale available on request.

### APPLICATION

Pneumatic control system, Air conditioning, Pumps etc...

# REOHYDE



[sales@realhydrofit.com](mailto:sales@realhydrofit.com)  
[reohydesales@gmail.com](mailto:reohydesales@gmail.com)



[www.realhydrofit.com](http://www.realhydrofit.com)



9869078630, 9167921882  
91 22 66573951/52/53, 23717488



# ★★★★★ *REAL HYDROFIT & CO.*®

SPLTS: PRESSURE GAUGES - FLEXIBLE HOSES - HYDRAULIC FITTINGS

## SCHAFFER & LOW PRESSURE DIAPHRAGM PRESSURE GAUGES

“RH” Low Pressure Diaphragm Gauges (LPD) & Capsule Gauge are suitable for Low Pressure measurement of dry and gaseous media, commercial heating, level measurement, gases distribution & filtration system.



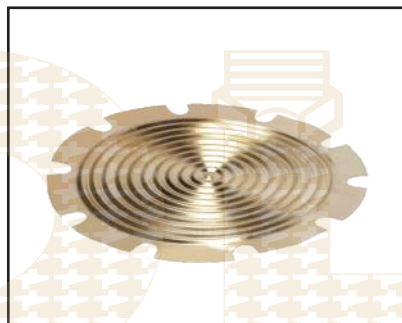
100mm Schaffer  
Diaphragm



SS 316 Schaffer  
Diaphragm



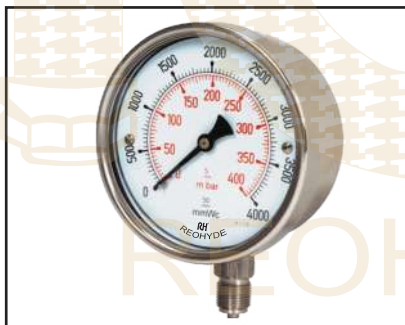
100mm Low  
Pressure Diaphragm



SS 316 Low  
Pressure Diaphragm



150mm Low  
Pressure Diaphragm



100mm Compact  
Capsule



SS 316 Capsule  
Diaphragm



[sales@realhydrofit.com](mailto:sales@realhydrofit.com)  
[reohydesales@gmail.com](mailto:reohydesales@gmail.com)



[www.realhydrofit.com](http://www.realhydrofit.com)



9869078630, 9167921882  
91 22 66573951/52/53, 23717488



# ★★★★★ REAL HYDROFIT & CO.®

SPLTS: PRESSURE GAUGES - FLEXIBLE HOSES - HYDRAULIC FITTINGS

## SCHAFFER & LOW PRESSURE DIAPHRAGM PRESSURE GAUGES

### CONSTRUCTION FEATURES

Dial Size	100mm & 150mm
Accuracy	±1% of full scale
Case & Bezel (IP-65)	SS 304 Snap Action Bayonet Type
Movement	SS 304 / Brass
Pressure Element	SS 316 Diaphragm / Compact capsule
Dial	Aluminum white painted with 270° black scale marking
Pointer	Al. / Brass, Zero adjustment / Micro Zero Adjustment Pointer
Window	Toughened / Safety glass
Over Load Protection	125% of f.s.d. for ≤ 150 Kg/cm <sup>2</sup> 115% of f.s.d. for > 150 Kg/cm <sup>2</sup>
Mounting	Direct Bottom Entry
Scale Range	For Schaffer Diaphragm: 760mmHg Vacuum, Compound, 0.6 to 21 Kg/cm <sup>2</sup> For Low Pressure Diaphragm / Compact Capsule: 250mmWc to 6000mmWc
Upper Chamber Material	SS 304 / Carbon Steel Powder Coated.
Diaphragm Material	Brass / SS 316, Teflon Coating can provided if required.
Lower Chamber	SS 304 /SS 316, PTFE Lining provide if required (Threaded / Flange type)

### OPTIONAL FEATURES

- **SP:** Model with SS 304 Case & Bazel
- **Eco:** Model with Carbon Steel Case & Bazel (Powder Coated / Nical Plated)
- Flanged connection available on request.

### APPLICATION

Medical & Vacuum Technology, environment & heating engineering, level indication & filter monitoring.



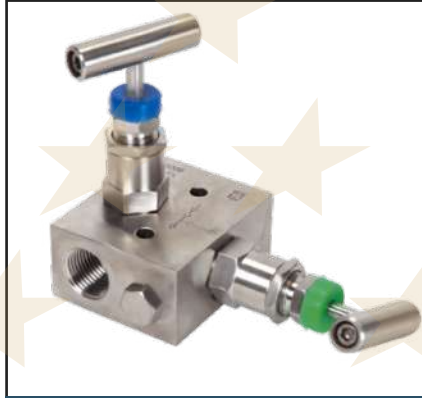
# ★★★★★ *REAL HYDROFIT & CO.*®

SPLTS: PRESSURE GAUGES - FLEXIBLE HOSES - HYDRAULIC FITTINGS

## PRESSURE GAUGE ACCESSORIES



**Comperator Machine**



**2 Way Manifold**



**3 Way Manifold**



**Snubber**



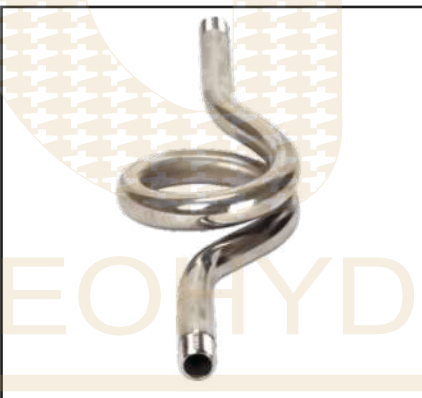
**2 Way Gauge Cock**



**3 Way Gauge Cock**



**Pigtail Type**



**Eco-Pigtail Type**



**U Type**



[sales@realhydrofit.com](mailto:sales@realhydrofit.com)  
[reohydesales@gmail.com](mailto:reohydesales@gmail.com)



[www.realhydrofit.com](http://www.realhydrofit.com)



9869078630, 9167921882  
91 22 66573951/52/53, 23717488



# ★★★★★ *REAL HYDROFIT & CO.*®

SPLTS: PRESSURE GAUGES - FLEXIBLE HOSES - HYDRAULIC FITTINGS

## PRESSURE GAUGE ACCESSORIES

### SNUBBER

Snubber is intended to suppress the effect of sudden pressure pulses and fluctuation of pressure peaks. It is provided with adjustable screw to restrict the flow as per operating condition.

**MOC: SS 304, SS 316.**

### GAUGE SAVER

Gauge saver is intended to protect pressure gauge against the effect of pressure that exceed the maximum pressure rating of the pressure gauge.

**MOC: SS 304, SS 316.**

### GAUGE SYPHON

Pigtail Type & 'U' shaped siphon are intended to protect pressure gauge from the effect of hot pressure media such as steam and also to reduce the effect of rapid pressure surge.

The steam condensate inside the coil of siphon prevent direct contact.

**MOC: Carbon Steel, SS 304 & SS 316.**

### GAUGE COCK & NEEDLE VALVE

Needle valve is intended to isolate the pressure gauge from pressure medium or to throttle and to damp pressure pulses.

**MOC: SS 304 & SS 316.**

### MANIFOLD

Manifold is intended for isolating and pressure equalizing.

**MOC: SS 304 & SS 316.**

### COMPARISON TESTER

Comparison tester is intended to compare the reading of tested pressure gauge & master pressure gauge by pressure balancing method.

**MOC: SS 304.**



[sales@realhydrofit.com](mailto:sales@realhydrofit.com)  
[reohydesales@gmail.com](mailto:reohydesales@gmail.com)



[www.realhydrofit.com](http://www.realhydrofit.com)



9869078630, 9167921882  
91 22 66573951/52/53, 23717488



# ★★★★★ REAL HYDROFIT & CO.®

SPLTS: PRESSURE GAUGES - FLEXIBLE HOSES - HYDRAULIC FITTINGS

## DIGITAL PRESSURE GAUGES



**Back Panel Mounting  
Digital Pressure  
Gauge**



**Direct Mounting  
Pr. Transmitter**



**Diaphragm Type  
Pr. Transmitter**



**Bottom Mounting  
Digital Pressure  
Gauge**

### CONSTRUCTION FEATURES

<b>Selection of Engineering Units</b>	Kg/cm <sup>2</sup> , Bar, PSI.
<b>Enclosure</b>	Aluminum Anodised, Light weight / SS 304
<b>Display</b>	8 x 2 Dot matrix display, shows pressure, unit & low batt.
<b>Media</b>	It works with any media that will not adversely affect SS 316
<b>Accuracy</b>	± 0.15% & 0.5% or better of full scale at calibrated temperature.
<b>Power</b>	Standard 9 V 150 mAh, Ni MH with charger or 230 VAC, 50 Hz
<b>Connection</b>	¼" BSP Male ( other on request )
<b>Over Pressure</b>	130% of specified range
<b>4-20 mA</b>	Available ( Optional )
<b>SPDT Relay output</b>	Available (Optional) Provides 2 adjustable SPDT relay
<b>Diaphragm seals</b>	Various size, style and MOC available.

### CONSTRUCTION FEATURES ( Pressure Transmitter )

<b>Pressure Range</b>	50, 100, 200, 300, 500, 1000, 3000, 5000, 10,000 psi
<b>Accuracy</b>	± 0.25% of FS
<b>Media Compatibility</b>	Fluids compatible with 17-4 PH stainless steel
<b>Pressure cycles</b>	> 10 million
<b>Pressure overload</b>	2 times rated pressure without calibration shift
<b>Burst Pressure</b>	5 times rated pressure
<b>Long Term Stability</b>	±0.25% FS typical (12 months)
<b>Temperature</b>	-40°C to 125°C

### APPLICATION

Used for re-calibration of general service pressure gauges or any other pressure related instruments.



sales@realhydrofit.com  
reohydesales@gmail.com



www.realhydrofit.com



9869078630, 9167921882  
91 22 66573951/52/53, 23717488



# ★★★★★ REAL HYDROFIT & CO.®

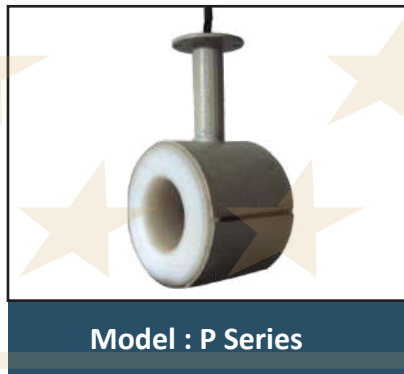
SPLTS: PRESSURE GAUGES - FLEXIBLE HOSES - HYDRAULIC FITTINGS

## ELECTRO MAGNETIC FLOWMETERS

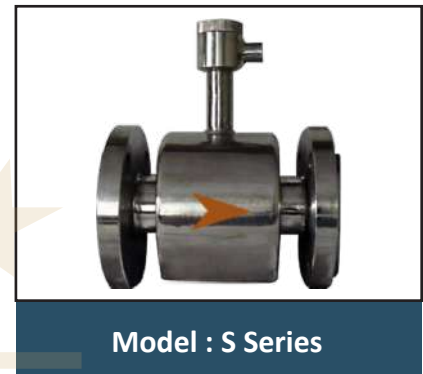
“RH” full bore flow meter is a cost effective flow meter for conductive liquids such as Raw Water, Chilled Water, effluents, Potable water and industrial chemicals. Using time proven electromagnetic flow metering principle, “RH” flow meters are available for pipes from ½”NB to 6”NB. Since there are no moving parts, the flow meter gives years of maintenance free service. It’s performance is independent of temperature, pressure, density and viscosity of medium. The flow meter is obstruction less and hence the pressure drop is almost negligible.



Electro- Magnetic  
Flow Meters



Model : P Series



Model : S Series

“RH” has all the features required in field mountable metering equipment. These include-weather proof / flame proof enclosure, RS485 communication option, with 4 to 20 mA isolated Current output for Flow signal transmission option for process control. The converter is available as field mounted-IP65 protection category. An optional batching controller also available on request.

### TYPICAL FLOW RATE TABLE

Pipe - Size (NB)	15(½")	25(1")	40(1½")	50(2")	80(3")	100(4")	150(6")
At Velocity 0.5 m/sec in LPM	~5	~15	~37	~60	~150	~235	~530
At Velocity 5 m/sec in LPM	~50	~150	~370	~600	~1500	~2350	~5300

### APPLICATION

This Flowmeters find varied applications where the flowing medium is difficult to handle. Major advantage of these flowmeters are : zero pressure drop, No moving part and highest accuracy level at most affordable cost. Some of the major application can be described below:

- Effluent Treatment plant.
- Sewage Treatment plant.
- Water supply Schemes
- Pulp and Papers
- Sugar industries and distilleries
- Steel and Aluminums
- Chemical / Pharmaceuticals
- Food and Drugs.

### CONSTRUCTION FEATURES

- High Accuracy Flow metering
- Optional Digital Transmission
- Isolated 4 to 20 mA current output
- IP 65 Field / Wall mounted Enclosure
- 2 Line Alpha numeric back lit display
- Flange / sandwich type mounting
- Easy maintenance as no moving part.
- Operates over wide range of Pressure and Temperature.
- Low cost against highest quality.



sales@realhydrofit.com  
reohydesales@gmail.com



www.realhydrofit.com



9869078630, 9167921882  
91 22 66573951/52/53, 23717488



# ★★★★★ REAL HYDROFIT & CO.®

SPLTS: PRESSURE GAUGES - FLEXIBLE HOSES - HYDRAULIC FITTINGS

## THERMOCOUPLE & RTD

RH Thermocouples are suitable for fluid and gaseous media under moderate mechanical load and normal chemical traces. Thermocouple are temperature sensors which directly supply a voltage dependent on temperature due to their thermoelectric properties.



Rigid Stem Type Thermocouple



Mineral Insulated Type Thermocouple



"L" Shape Type Thermocouple

### CONSTRUCTION FEATURES

Enclosure	Die Cast Aluminum
Protection	IP, Flameproof Grade IIA, IIB & IIC
Sensor Element	J, K, E, T, N ( Simplex or Duplex )
	J ( Fe - CuNi ) - 800° C
	K ( Nicr - Ni ) - 1200° C
	E ( Nicr - CuNi ) - 800° C
	T ( Cu - CuNi ) - 400° C
	N ( NiCrSi - NiSi ) - 1200° C
Cold End	Terminated in to ceramic terminal block
Stem Material	SS 316 / SS 304, Inconel, Monel, Haystallo
Stem Dia.	6mm, 8mm, 10mm & 12mm
Stem Length	300mm Standard
Hot Junction	Ungrounded unless specified
Configuration	2 wire, 3 wire & 4 wire
Connection	¼", ⅜", ½" BSP / NPT Adjustable.
Range	0° C to 1200° C

### OPTIONAL FEATURES

- Head mounted transmitter can be mounted
- 'L' Shape or any other shape available on request.

### APPLICATION

Machinery, Plant & Tank, Construction, Energy & power plant, chemical industries, Sanitary, heating & air conditioning.



sales@realhydrofit.com  
reohydesales@gmail.com



www.realhydrofit.com



9869078630, 9167921882  
91 22 66573951/52/53, 23717488



# ★★★★★ REAL HYDROFIT & CO.®

SPLITS: PRESSURE GAUGES - FLEXIBLE HOSES - HYDRAULIC FITTINGS

## RESISTANCE THERMOMETER

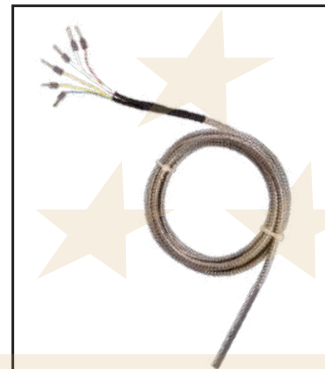
“RH” RTD intended high purity electrical resistance wire, non inductively wound on ceramic or glass base material. When RTD element subjected to heat it changes its electrical resistance value corresponding to variation in temperature & thermal co-efficient.



RTD with TC Connection



RTD with Teflon extension cable



RTD with Armoured



RTD with SS Construction

### CONSTRUCTION FEATURES

Enclosure	Die Cast Aluminum.
Protection	IP, Flameproof Grade IIA, IIB, IIC.
Accuracy	Class A & Class B.
Sensor Element	PT-100 Simplex & PT-100 Duplex.
Cold End	Terminated in to ceramic terminal block.
Stem Material	SS 316 / SS 304, Inconel, Monel, Haystallopy.
Stem Dia.	6mm, 8mm, 10mm & 12mm.
Stem Length	300mm Standard.
Configuration	2 wire, 3 wire & 4 wire.
Connection	1/4", 3/8", 1/2" BSP / NPT Adjustable.
Range	-200°C to 600°C

### OPTIONAL FEATURES

- Head mounted transmitter can be mounted
- Cable RTD available
- Cable insulation made of PVC, Silicon.
- Teflon Coated & SS Braded

### APPLICATION

Plastic processing machineries, Injection Moulding Machines, Engine Cylinder head and oil pumps, bearing, pipelines & tanks. Energy & power plants, chemical industries, food & beverage industries, sanitary, heating & air conditioning technology.



sales@realhydrofit.com  
reohydesales@gmail.com



www.realhydrofit.com



9869078630, 9167921882  
91 22 66573951/52/53, 23717488



# ★★★★★ REAL HYDROFIT & CO.®

SPLTS: PRESSURE GAUGES - FLEXIBLE HOSES - HYDRAULIC FITTINGS



sales@realhydrofit.com  
reohydesales@gmail.com

www.realhydrofit.com

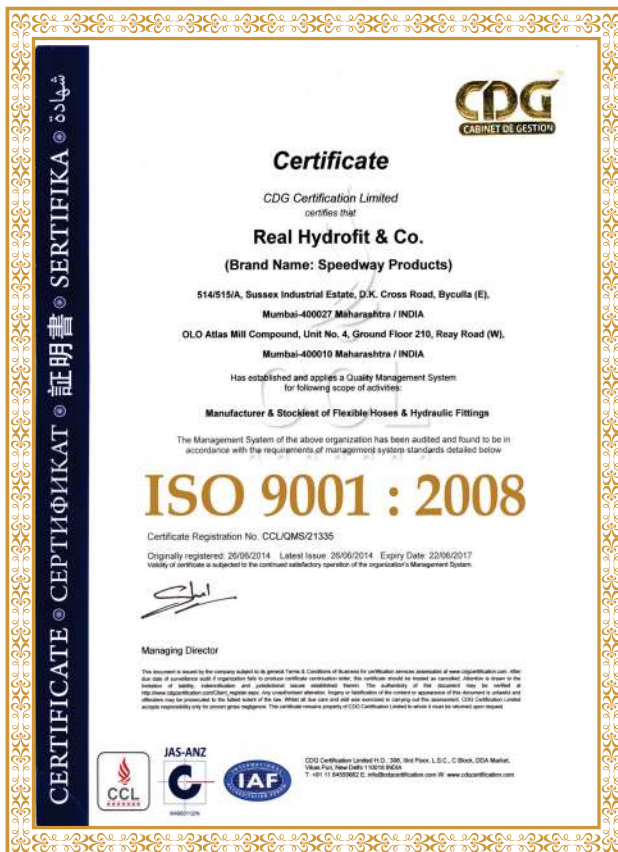
9869078630, 9167921882  
91 22 66573951/52/53, 23717488



# ★★★★★ REAL HYDROFIT & CO.®

SPLTS: PRESSURE GAUGES - FLEXIBLE HOSES - HYDRAULIC FITTINGS

Udyog Aadhaar Memorandum									
1. Aadhaar Number	74286041320								
2. PAN Number	ADUPM382L								
3. Name of Entrepreneur	AMIR ABDULHUSAIN MASTA								
4. Social Category of Entrepreneur	GENERAL								
5. Gender	Male								
6. Physically Handicapped	No								
7. Name of Enterprise	REAL HYDROFIT AND CO								
8. Type of Organization	Proprietary								
9. Location of Plant Details									
SN	Flat/Door/Block No.	Name of Premises/Building	Village	Road/Street/ Lane	Area/Locality	City	Pin	State	District
1	UNIT NO.4, GROUND FL.	OLD ATLAS MILL COMPOUND		210, REAY ROAD (W)	REAY ROAD	MUMBAI	400010	MAHARASHTRA	MUMBAI CITY
Official Address of Enterprise									
10.	514/A, SUSSEX INDUSTRIAL ESTATE, D.K. CROSS ROAD, BYCULLA (E), MUMBAI								
	District		MUMBAI CITY		State		MAHARASHTRA		PIN 400027
	Mobile No:		9869078630		Email:		sales@realhydrofit.com		
11. Date of commencement	29/03/1962								
12. Previous Registration details-if any	-								
Bank Details									
13.	IFS Code		UBIN051626						
	Bank Account:		316201010036101						
14. Major Activity	MANUFACTURING								
SN	NIC 2 Digit	NIC 4 Digit	NIC 5 Digit Code						Activity Type
16.	23	2399	23999 - Manufacture of other non-metallic mineral products n.e.c. (includes asbestos yarn and fabric, and articles of asbestos yarn and fabric such as clothing, headgear, footwear, confectionery, paper or felt, friction material with a basis of asbestos or other mineral substances or of cellulose including unmounted articles such as friction material; mineral insulating material (slag wool, rockwool and similar mineral wools, expanded vermiculite, expanded clays and similar insulating material); products of glass wool for heat-insulating; articles of asphalt or similar material (e.g. coal tar pitch), gypsum and articles of other mineral substances)						Manufacturing
2	32	3200	32000 - Other manufacturing n.e.c.						Manufacturing
17. Persons employed	21								
18. Investment (Plant & Machinery / Equipments)	50/Rs. In Lakhs								
19. District Industry Centre	MUMBAI CITY								
Declaration									
I hereby declare that information given above is true to the best of my knowledge. Any information, that may be required to be verified, shall be provided immediately before the concerned authority.									
MyMeme Mobile App (Beta Version) is available now for download: <a href="http://tiny.cc/mymemeapp">http://tiny.cc/mymemeapp</a>									



sales@realhydrofit.com  
reohydesales@gmail.com

www.realhydrofit.com

9869078630, 9167921882  
91 22 66573951/52/53, 23717488

# OUR MORE PRODUCTS

**RH**  
 REAL HYDROFIT & CO.  
 SPLITS: TUBE-PIPE FITTINGS - FLEXIBLE HOSES - HYDRAULIC FITTINGS

## TUBES & PIPE FITTINGS

IAF CE ISO 9001:2015  
 www.realhydrofit.com

**RH**  
 REAL HYDROFIT & CO.  
 SPLITS: PP CLAMP - FLEXIBLE HOSES - HYDRAULIC FITTINGS

## PIPE CLAMPS

IAF CE ISO 9001:2015  
 www.realhydrofit.com

**RH**  
 REAL HYDROFIT & CO.  
 SPLITS: VALVE - FLEXIBLE HOSES - HYDRAULIC FITTINGS

## INSTRUMENTATION VALVES

BALL VALVES NEEDLE VALVES MONOFLANGE VALVES MANIFOLD VALVES CHECK VALVES

M.O.C:  
 A479 304, A479 316, A182 GRF 316, Monel,  
 Hastelloy, Inconel, Duplex,  
 A choice of PTFE and PEEK are available.

IAF CE ISO 9001:2015  
 www.realhydrofit.com

**RH**  
 REAL HYDROFIT & CO.  
 SPLITS: VALVE - FLEXIBLE HOSES - HYDRAULIC FITTINGS

## COMPLETE RANGE OF ISI & IBR APPROVED VALVES & COCKS

IAF CE ISO 9001:2015  
 www.realhydrofit.com

**RH**  
 REAL HYDROFIT & CO.  
 Hygienic Hose & Fittings

IAF CE ISO 9001:2015  
 www.realhydrofit.com

sales@realhydrofit.com  
 reohydesales@gmail.com

www.realhydrofit.com

9869078630, 9167921882  
 91 22 66573951/52/53, 23717488

# OUR MORE PRODUCTS

\*\*\*\*\*  
**REAL HYDROFIT & CO.**  
**industrial hoses**

IAF CCL CE  
 ISO 9001:2008 CERTIFIED COMPANY  
 www.realhydrofit.com

\*\*\*\*\*  
**REAL HYDROFIT & CO.**

**EXPANSION JOINTS**

IAF CCL CE  
 ISO 9001:2008 CERTIFIED COMPANY

\*\*\*\*\*  
**REAL HYDROFIT & CO.**  
**Instrumentation and Tube Fittings**  
**Imperial and Metric**

Specialist in: Low/High Pressure Hydraulic, Air, LPG, O<sub>2</sub>, Steam, Chemical, Food Grade Hoses.  
 All Types of Industrial, Seibon, S.S. Metallic, Corrugated Flexible Hoses, Pressure Gauges & All Types of Fittings.

\*\*\*\*\*  
**REAL HYDROFIT & CO.**  
**Rubber Expansion Joint**

IAF CCL CE  
 ISO 9001:2008 CERTIFIED COMPANY

\*\*\*\*\*  
**REAL HYDROFIT & CO.**  
**FLANGES & PIPES**

*REAL service comes with sincerity and integrity first, money later.*

\*\*\*\*\*  
**REAL HYDROFIT & CO.**  
**HYDRAULIC - TEMPERATURE  
 HOSES & FITTINGS**

sales@realhydrofit.com  
 reohydesales@gmail.com

www.realhydrofit.com

9869078630, 9167921882  
 91 22 66573951/52/53, 23717488



★★★★★  
**REAL HYDROFIT & CO.**®

SPLTS: PRESSURE GAUGES - FLEXIBLE HOSES - HYDRAULIC FITTINGS

**514/A, Sussex Industrial Estate, Dadoji Konddev Cross Road,  
Byculla (E), Mumbai- 400027**

**☎ +91-9869078630 / +91-9167921882**

**☎ +91-22-66573951/ 52 /53 / 23717488**

**sales@realhydrofit.com reohydesales@gmail.com**

**www.realhydrofit.com**

**GST NO: 27ADUPM0382L1ZX**